



## PC182T-3-4

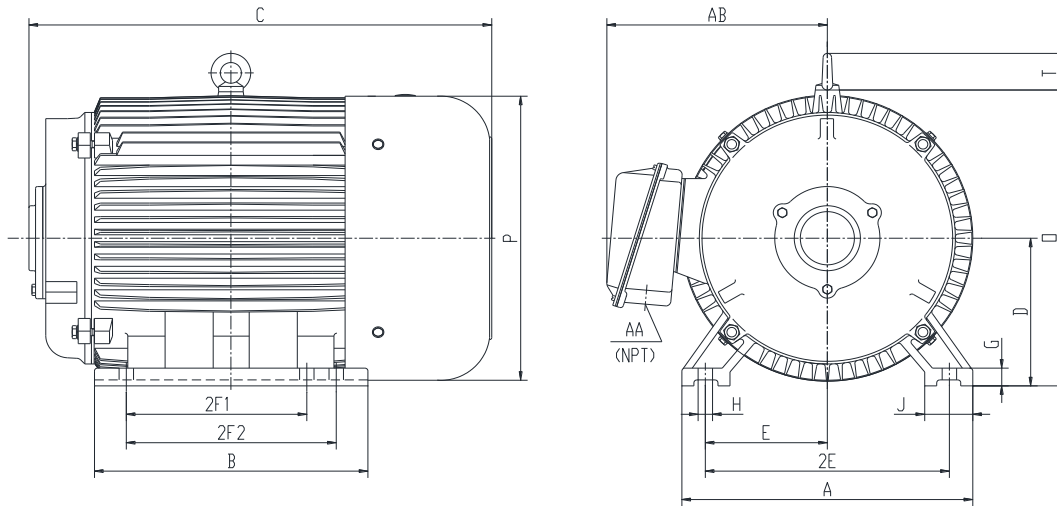
### CONVERTER

DESIGNED FOR USE WITH ROTARY PHASE CONVERTER UNITS

TOTALLY ENCLOSED FAN COOLED

SPIKE RESISTANT WIRE (2200V PEAK VOLTAGE SPIKE RATING)

Factory Certified for T2B Class I, Division II, Groups A,B,C & D and Class II, Division II, Groups F & G



### DIMENSIONS

HP	RPM	Frame	MOUNTING													
			A	B	C	D	G	H	J	E	2E	2F1	2F2	O	P	T
3	1800	182T	9.5	7.3	12.2	4.5	0.6	0.41	2	3.75	7.5	4.5	NA	9.1	8.7	1.6

Conduit Box		Bearings		Mount
AA	AB	DE	ODE	
0.75	7.5	6306-ZZ	6306-ZZ	F1

**BEARING LUBRICATION:** The bearings come lubricated with Mobil Polyrex EM Polyurea Grease.





## PC182T-3-4

### CONVERTER

DESIGNED FOR USE WITH ROTARY PHASE CONVERTER UNITS

TOTALLY ENCLOSED FAN COOLED

SPIKE RESISTANT WIRE (2200V PEAK VOLTAGE SPIKE RATING)


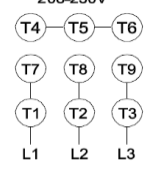
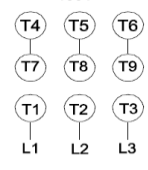



Factory Certified for T2B Class I, Division II, Groups A,B,C & D and Class II, Division II, Groups F & G

### PERFORMANCE DATA

HP	RPM	Frame	Voltage	Frequency (Hz)	Full Load S.F.	Insulation Class	NEMA Design	Slip (%)	NEMA Code	Enclosure Type	IP Rating	Max. Ambient
3	1750	182T	208-230/460	60	1.15	F	B	2.8	K	TEFC	55	40 °C

Amps (460V)		Efficiency (%)		Power Factor	Torque (ft-lb)			DE Bearing	ODE Bearing	Connection	Weight (lbs.)
FLA	LRA	NOM.	MIN.	100%	FLT	LRT %	BDT %	6306-ZZ	6306-ZZ	9 Lead 2Y/Y	83
4.4	32	85.5	82.5	0.76	8.8	270	350				

### NAME PLATE

 <b>ROTARY PHASE CONVERTER</b> INVERTER DUTY 20:1 VT; 10:1 CT      Hernando, MS 38632										CONNECTION DIAGRAMS				
CAT NO.		PC182T-3-4				FRAME		182T	WT/LBS		83	<b>208-230V</b> 		
HZ	60	S.F.	1.15	HZ	50	S.F.	1.0	ENCL	TEFC	IP	55			
HP	3	RPM	1800	HP	3	RPM	1500	DUTY CONT		DES	B	<b>460V</b> 		
VOLTS		208-230/460		VOLTS		190/380		AMB	40 °C	INS	F			
AMPS		9.4-8.8/4.4		AMPS		11/5.5		DE BRG		6306-ZZ		 AC INDUCTION CONVERTER  		
CODE	K	P.F.	0.76	CODE	H	P.F.	0.78	ODE BRG		6306-ZZ				
EFF	85.5	MIN	82.5	EFF	83.0	MIN	80.0	SER NO						

### APPLICATIONS:

Specifically designed for use as the converter component for rotary phase converters.